





A journey around Chikmagalur

With the creation of Brigade Hospitality Services Pvt. Ltd, our sphere of activities has expanded to include serviced apartments and corporate residences; senior citizens' residences; clubs; hotels and, most recently, holiday resorts. The theme of this calendar revolves around one of these new worlds...

Our latest venture, the 33-acre *Cascades Hill Resort & Spa*, nestled in the mountains of the Western Ghats, reflects both an exciting future and a precious past. For it is situated just twelve km away from the town of *Chikmagalur*...where Brigade Group has its roots. Our founders belong to a respected family of coffee planters from *Chikmagalur*, known throughout the region for their 100-year-old tradition of philanthropy and business integrity. With this personal connection, it gives us special pleasure to present *Chikmagalur* and its environs to you in the pages to follow.

Chikmagalur is a quiet plantation town, a centre of Karnataka's 'coffee cradle'. Its charming, old-world ambience—now pleasantly modernised by good roads and a golf course—belies the fact that it is only 4 hours away from the busy metropolis of Bangalore, on the Bangalore-Hassan-Mangalore National Highway 4.

Part of the Malnad, or hill country, this is truly a beautiful region. The mountains (with some of the highest peaks in India

and lowlands around *Chikmagalur*, criss-crossed by perennial rivers, streams and waterfalls, are rich with dense forests and natural fodder. Which makes it an ecological treasure house, home to a profusion of astoundingly diverse and distinct species of flora and fauna...many of which are endemic to the region. Several bird and wildlife sanctuaries are located close to *Chikmagalur*.

The wonders of *Chikmagalur* are not limited to its natural beauty. A day trip from the town takes you to some of the most important historical, cultural and religious monuments and shrines in India. The temples of *Belur* and *Halebid* offer some of the finest examples of 12th century Hoysala art and architecture. The seeds of Jainism in Karnataka were sown in the 3rd century B.C. at *Sravanabelagola*, where the world's tallest monolithic statue stands.

Sringeri, one of the four Mutts started by Adi Shankaracharya in the 8th century, is another important pilgrim centre. The *Inam Dattatreya Peetha* shrine at *Baba Budan* is revered by both Hindus and Muslims alike.

The photographs in this calendar will take you on a journey to some of the most beautiful places in and around *Chikmagalur*. When the *Cascades Hill Resort & Spa* is operational a couple of years from now, we hope you will revisit these places in person.



wishes you a happy & prosperous 2006



January 2006

S	1	8	15	22	29
M	2	9	16	23	30
T	3	10	17	24	31
W	4	11	18	25	
T	5	12	19	26	
F	6	13	20	27	
S	7	14	21	28	



Gomatesvara, Sravanabelagola
(enroute from Bangalore, 150 km before Chikmagalur)

PHOTOGRAPH BY: DR MANOJ C. SINDHGI, A.R.P.S.

Gomatesvara, Sravanabelagola

Enroute from Bangalore, 150 km before Chikmagalur

Our journey to places of interest around Chikmagalur begins at the statue of the Jain saint Gomatesvara, on Indragiri (also known as Vindhyagiri) Hill in Sravanabelagola—one of the most important Jain pilgrimage destinations in India.

Sravanabelagola is the site of the world's tallest monolithic statue. Standing 58 feet high and carved from a single rock, the statue of Gomatesvara was sculpted in 981 A.D. It can be seen from a distance of 24 kilometres. The statue was commissioned by the Ganga King Rachamalla, created by the sculptor Aristanemi and erected under the supervision of his general Chavundaraya.



Steps going up Indragiri Hill

Art historian James Fergusson believes that "Nothing grander or more imposing exists anywhere out of Egypt". The statue is remarkable both for its size and the artistic control exercised by the sculptor.

The intensity of Gomatesvara's meditation is portrayed by the serenity on his face; the creepers that have begun to climb, undisturbed, up his legs and the snakes lying at his feet.

Every 12 years, the statue of Gomatesvara is anointed with milk, curds, ghee, saffron, flowers and gold coins, in a spectacular ceremony known as the Mahamastakabhisheka or Great Bath, attended by tens of thousands of devotees from all over India. The Mahamastakabhisheka will take place between the 8th and 19th of February 2006.

Several Jain bastis (temples) and monasteries are located on both Indragiri Hill and nearby Chandragiri Hill.

Gomatesvara was the son of the first tirthankara or Jain saint, King Rishabdeva of Ayodhya, also known as Adinatha. Beset by unhappiness after defeating his brother in a battle over their father's kingdom, Gomatesvara renounced the world and sought enlightenment.

The seeds of Jainism in Karnataka were sown in the 3rd century B.C., when Emperor Chandragupta Maurya renounced his kingdom and came to Sravanabelagola, accompanied by his guru Bhadrabahu.

BRIGADE GROUP'S 2006 CALENDAR

CONCEPT: BRIGADE GROUP
TEXT AND DESIGN: resourcedesign.co.in
FLYLEAF PHOTOGRAPHS OF COFFEE ESTATE: T.N.A. PERUMAL, F.R.P.S., M.F.I.A.P.



For a better quality of life

UPGRADE TO BRIGADE

Established in 1986, Brigade Group is a name instantly identified with Bangalore. Over the years, we have constructed integrated enclaves; luxury apartments; offices and state-of-the-art software facilities; retail spaces and a multi-storey industrial complex—many of them a first-of-their-kind in the state. In recent times, our scope of operations has expanded to include areas related to property management services, the hospitality industry and education.

LIFESTYLE ENCLAVES | SOFTWARE/BPO/CORPORATE FACILITIES
MALLS & SHOPPING COMPLEXES | SCHOOLS | CLUBS | RESORTS
SERVICED APARTMENTS & CORPORATE RESIDENCES | HOTELS
RETIREMENT RESIDENCES | HOSPITALS | PROPERTY MANAGEMENT

PENTHOUSE, BRIGADE TOWERS, BRIGADE ROAD, BANGALORE 560 025 INDIA
PH: +91-80-5137 9200 FAX: +91-80-2221 8497
enquiry@brigadegroup.com www.brigadegroup.com
AN ISO 9001-2000 PROPERTY DEVELOPER

Holidays/Festivals in January

- 1 New Year's Day (R)
- 11 Bakrid (C, S)
- 14 Makara Sankranti / Pongal (S)
- 26 Republic Day (C, S)

S—State
C—Central
R—Restricted



A frieze on Hoysalesvara Temple, Halebid (36 km from Chikmagalur)

February 2006

S	M	T	W	T	F	S
			1	2	3	4
5	6	7	8	9	10	11
12	13	14	15	16	17	18
19	20	21	22	23	24	25
26	27	28				

MAHA SHIVARATRI



PHOTOGRAPH BY: T.N.A. PERUMAL

Hoysalesvara Temple, Halebid
36 km from Chikmagalur



Part of a frieze, Hoysalesvara Temple, Halebid

The most remarkable amongst the Hoysala temples are the ones at Belur, Halebid and Somanathpur. And of these, the Hoysalesvara temple at Halebid, dedicated to Lord Shiva, is considered the greatest; representing the pinnacle of their artistic and architectural achievements. According to art historian James Fergusson, "It is one of the most marvellous exhibitions of human labour to be found even in the patient east".

Work on the Hoysalesvara temple commenced in 1121 A.D. and continued for 86 years—despite which it was never completed. Fergusson remarks that, "The great temple of Halebid, which, had it been completed, is one of the buildings on which the advocate of Hindu architecture would desire to take his stand". Almost overwhelming in its artistic detail and creative vision, the temple is covered, inside and out, with a profusion of friezes and carvings depicting Hindu gods and goddesses, sages, birds, animals, and scenes involving war, hunting, agriculture, dance and music.

Also to be seen at Halebid are several other significant temples, shrines, Jain bastis, an archaeological museum and a lake.

Halebid, founded at the start of the 11th century and originally known as *Dwarasamudram* or *Gateway to the Seas*, was the capital city of the Hoysala empire. In the early 1300s, after the city was destroyed by the Delhi Sultanate and became a shell of its former self, it was renamed Halebid (Old Capital). Belur then became the capital of the Hoysala empire.

The Hoysalas, who ruled over parts of Karnataka between 1000 and 1346 A.D., were great warriors and prolific temple builders. A legacy of over 1,500 temples in 958 centres attests to their vision, craftsmanship and inspired artistry.



Lake near Hoysalesvara Temple, Halebid

This is Brigade Gateway.

2-acre Man-made Lake: Tree-lined walkways and promenade. Seating areas. • Fountain. • Landscaped gardens. **Orion Mall:** Books. • Apparel. • Cosmetics. • Shoes. • Home needs. • Music. Jewellery. • Stationery. • Gifts. • Electronics. • Multi-cuisine food court. • Cafés. • Multiplex showing films in all main languages. Beauty parlour. • Men's salon. • Travel service. • ATMs. **North Star:** A 30-storey office and software facility. Bangalore's tallest building. 1 million sft. Observation deck. **The Brigade School:** CBSE curriculum. • Pre-school to Standard 10. • Co-educational. 2000+ students. **Star Hotel:** 250+ rooms. • Restaurants. • Bar-lounges. • Coffee shops. • Business/Conference facilities. **Hospital:** Diagnostics. • 200-bed inpatient facility. • Outpatient care. Leading consultants. • Emergency care. **Convenience Stores:** Groceries. • Fruits and vegetables. • Florist. • Toiletries. • Medicines. **Galaxy Club:** Swimming pool. • Squash. • Tennis. • Badminton. Table tennis. • Billiards. • Gym. • Steam rooms. • Sauna. Jacuzzi. • Lounge.

Brigade Gateway, a 40-acre lifestyle enclave in Malleswaram-Rajajinagar. Designed by H.O.K., New York, the world's leading architects. Spaciously laid out residential and commercial zones. 1200+ luxury apartments spread across 13 wings. Landscaped courtyards. Several gates to the enclave, with exclusive entry/exits for the residential section. All this, for a better quality of life. We warmly invite you to **Upgrade to Brigade**.



SITE OFFICE: +91-80-5180 8800 CORP. HQ: +91-80-5137 9200
gateway@brigadegroup.com www.brigadegroup.com

INFO HEREIN IS CONCEPTUAL. DOES NOT FORM PART OF ANY OFFER OR CONTRACT. E&OE.

Holidays/Festivals in February

- 6 Madhvanavami (R)
- 10 Last Day of Muharram (C, S)
- 11 Second Saturday (S)
- 26 Mahashivaratri (R)

S—State
C—Central
R—Restricted



A devotee bowing reverentially in front of the Chennakesava Temple, Belur (enroute from Bangalore, 22 km before Chikmagalur)

March 2006

S	M	T	W	T	F	S
			1	2	3	4
5	6	7	8	9	10	11
12	13	14	15	16	17	18
19	20	21	22	23	24	25
26	27	28	29	30	31	

CHANDRAMANA
UGADI

PHOTOGRAPH BY: DR MANOJ C. SINDHGI

Chennakesava Temple, Belur
Enroute from Bangalore, 22 km before Chikmagalur

The temples at Belur and Halebid are some of the most visited and photographed temples in South India and a part of all serious tourist itineraries.

The famous Hoysala temple at Belur, the Chennakesava Temple, was built by King Vishnuvardhana around 1116 A.D., and dedicated to Lord Vishnu. The temple is located in a large, walled temple complex, along with three smaller temples and is believed to have taken a century to complete. The gopuram, however, is said to have been constructed at a later date, probably by Krishnadevaraya, the Vijayanagar emperor.

Like the Hoysalesvara temple, the star-shaped, perfectly proportioned Chennakesava temple is famous for its exuberant, intricate sculptural detail. Every major deity in the Hindu pantheon is said to be represented on the walls of the temple, which are covered from base to eaves with friezes and sculptures of animals, birds, warriors and apsaras. Larger panels depict scenes from the Mahabharata and Ramayana. Inside the temple are the celebrated pillars—so smooth they appear to have been turned on a lathe, and decorated with detailed sculptures. No two pillars are alike. Of special note are the 38 bracket figures of Madanikas, celestial nymphs depicted in a variety of everyday activities, and the *navaranga* inside the temple. Interestingly, Hoysala sculptors signed their work at this temple, an unusual break from the norm of the times.

Unlike the temples at Halebid and Somanathpur, the Chennakesava temple is a 'living temple', with religious worship carried on within it even today.

History is unclear as to what spurred these magnificent artistic and architectural efforts at Belur, Halebid and Somanathpur: it could have been to commemorate King Vishnuvardhana's conversion from Jainism to Vaishnavism or to celebrate his victory in wresting Talakadu from the Cholas.



The symbol of the Hoysala dynasty—the boy Sala killing the tiger



Sculpture, Chennakesava Temple, Belur



Whitefield is fast developing into a vibrant extension of the city—with malls, multiplexes and a growing community of young professionals. Situated on Whitefield Road, Brigade Metropolis will be a 36-acre, quiet, clean, green world to call your own. Each of the enclaves' three zones—residential, office facilities and retail—is set apart from the other for maximum convenience and privacy.

- 2- and 3-bedroom apts, 1500+ apartments in all
- Software facility / Office space
- Club with swimming pool, sports facilities and gym
- Shopping complex with provisions for a supermarket, restaurant, laundromat, beauty parlour, travel counter, pharmacy, clinics, ATMs and business centre
- Beautiful landscaping
- Several theme gardens
- Amphitheatre
- Party lawns
- Skate park
- Dance plaza
- Band stand

SITE OFFICE:
+91-80-5126 4321/22/23/24/25
CORP. HQ:
+91-80-5137 9200
metropolis@brigadegroup.com
www.brigadegroup.com



INFO HEREIN IS CONCEPTUAL. DOES NOT FORM PART OF ANY OFFER OR CONTRACT. E&OE.

Holidays/Festivals in March

- 11 Second Saturday (S)
- 14 Holi Feast (R)
- 30 Chandramana Ugadi (S)

S—State
C—Central
R—Restricted



9-hole golf course of the Chikmagalur Golf Club

April 2006

S	M	T	W	T	F	S
30						1
2	3	4	5	6	7	8
9	10	11	12	13	14 GOOD FRIDAY	15
16	17	18	19	20	21	22
23	24	25	26	27	28	29



PHOTOGRAPH BY: T.N.A. PERUMAL

The Chikmagalur Golf Club



Golf course and clubhouse

A visit to the Chikmagalur Golf Club is a must on the itinerary of every golf enthusiast who visits the region.

Few golf clubs enjoy such an exotic setting: nestled at the foot of the Baba Budan mountain range; surrounded by hills as far as the eye can see; sometimes draped in mist, usually bathed in sunshine. The moon rises early in the Western Ghats, which allows for the unusual pleasure of golf by moonlight. So idyllic is the Chikmagalur Golf Club, with its expansive fairways and picturesque buildings, that it is hard to imagine it was once a humble potato field.

The founders of the Chikmagalur Golf Club, who have strong roots in the region, attribute their inspiration to "a desire to do something nobody had attempted, something unique—which should be a jewel in our district".

The 9-hole 'jewel' came into existence in 2002. The course was designed by Phil Ryan of Pacific Coast Design, Melbourne—the design architect of numerous signature golf courses around the world. Covering an expanse of 56 acres, the Chikmagalur Golf Club has a fully furnished clubhouse with catering facilities and eight air-conditioned guest rooms (two of which have been sponsored by Brigade Group). Golfers can also enjoy a spot of fishing at the lake, located on the premises. The Club is managed by a 12-member committee and its smooth running ensured by an experienced staff of 40 people.

A major tournament has been conducted annually at the Chikmagalur Golf Club, ever since its inauguration. Brigade Group will be sponsoring the annual tournament for the next five years.

Plans are underway to add another 9 holes to the course, making it an 18-hole Championship Golf Course. The Club's founders would also like to promote eco-tourism and sports like mountain climbing, skydiving and para-gliding. Which adds up to more good news for visitors who enjoy sports in the great outdoors.

STATE-OF-THE-ART
OFFICES/SOFTWARE FACILITIES



BRIGADE TECH PARK
Whitefield, Next to ITPL
430,000 sft

Central plaza, cafeteria, gym, provision for swimming pool, food court, ATMs and convenience stores



**NORTH STAR
@ BRIGADE GATEWAY**
Malleswaram-Rajajinagar
Up to 1 million sft

30-storeys,
Bangalore's tallest building,
with an observation deck



**SUMMIT
@ BRIGADE METROPOLIS**
Whitefield Road
Up to 800,000 sft

Two towers connected by sky-bridges at various levels and abundant parking across five floors

Also, office and retail facilities at Ontikoppal, Mysore
PH: +91-80-5137 9200 enquiry@brigadegroup.com www.brigadegroup.com

Holidays/Festivals in April

- 6

Sri Ramanavami (R)
- 8

Second Saturday (S)
- 11

Mahaveera Jayanthi / Id-Meelad (C, S)
- 14

Good Friday / Ambedkar Jayanthi / Soura Ugadi (C, S)
- 30

Basava Jayanthi (C, S)
- S—State
C—Central
R—Restricted



Southern part of the Cascades Hill Resort & Spa site

May 2006

S	M	T	W	T	F	S
	1 MAY DAY	2	3	4	5	6
7	8	9	10	11	12	13 ^o
14	15	16	17	18	19	20
21	22	23	24	25	26	27 [•]
28	29	30	31			



PHOTOGRAPH BY: T.N.A. PERUMAL

Cascades Hill Resort & Spa
12 km from Chikmagalur



North-western view from the resort site

When Brigade Hospitality Services decided to set up a resort, we looked for a spot that would have a breathtaking natural setting, be pleasantly removed from the noise and confusion of modern life and yet be close to places of tourist interest. We found such a site, right next to our own coffee plantations, near our home town Chikmagalur.

Set against the majestic backdrop of the Western Ghats, the spot where the Cascades Hill Resort & Spa will be located is on a cloud-kissed hill slope that overlooks the picturesque town of Chikmagalur and the coffee plantations that surround it.

At an altitude of over 4,500 feet above sea level, the air is crisp and cool, with temperatures dropping to 8°C in winter and touching a maximum summer high of 30°C. It is weather made for outdoor pleasures: nature walks through our coffee plantations, treks, sports and sight-seeing. Early sunsets bring with them the advantage of bonfires that last long into the night, guided treks into the sleeping forest...and more.

The biological diversity of the Western Ghats is one of the richest in the world—second only to the Amazon Valley. Several major wildlife and bird sanctuaries are located near our resort.

Not only is the area blessed by nature, it is also touched by the exciting imprints of history. Unlike many other hill resorts, we have a variety of first magnitude tourist places in the immediate vicinity.

Best of all, trips to each of these places can be completed within a single day or less. This calendar will give you a picture of some of the things you can expect to see and do when you visit us.

With its natural beauty, sports and entertainment facilities, luxury accommodation, fine cuisine, and proximity to places of tourist interest, the Cascades Hill Resort & Spa will be an ideal holiday destination. One that is easy to reach, but hard to leave. (Read more about how we are turning our vision into reality on page 12.)



A view of our coffee estate, adjacent to the resort site

BRIGADE HOSPITALITY SERVICES PVT. LTD

CLUBS | SERVICED APTS & CORPORATE RESIDENCES
SENIOR CITIZENS' APTS | RESORTS | HOTELS



With our experience in residential projects and our increasing focus on quality of life and living, entering the hospitality industry seemed a natural progression.

After the success of Homestead Serviced Apartments, we started Serenity Retirement Residences and The Woodrose and Augusta clubs. We will shortly be starting other serviced apartments, retirement residences and clubs in different parts of the city.

MLR Convention Centre is named after Brigade Group's patriarch, the late Shri M.L. Ramachandra Setty. Located in the Brigade Millennium Campus, J.P. Nagar, the convention centre features a 450-seat auditorium with a professionally equipped stage, a 500-seat banquet hall, media room and cafeteria.



Cascades Hill Resort & Spa is our first resort venture, set in the picturesque Western Ghats near Chikmagalur. Our first star hotel will be built in Brigade Gateway, an integrated enclave in the Malleswaram-Rajajinagar area.



Holidays/Festivals in May

- 1 May Day (C, S)
 - 2 Shankara Jayanthi/Sri Ramanujacharya's Thiru (R)
 - 13 Buddha Poonima (R)/Second Saturday (S)
- S—State
C—Central
R—Restricted



Elephants, Muthodi Wildlife Sanctuary (32 km from Chikmagalur)

June 2006

S	M	T	W	T	F	S
				1	2	3
4	5	6	7	8	9	10
11	12	13	14	15	16	17
18	19	20	21	22	23	24
25	26	27	28	29	30	



PHOTOGRAPH BY: DR MANOJ C. SINDHGI

Muthodi Wildlife Sanctuary

32 km from Chikmagalur

The southern stretches of the Western Ghats are one of the most ecologically exciting and bio-diverse places in India. The combination of tropical moist mixed deciduous forest, tropical dry deciduous forest, and semi-evergreen shola forest—with their rich supply of trees, bamboo, plants and fodder—makes the region an ecological wonderland.

Covering an area of 492 square kilometres, the Muthodi Wildlife Sanctuary (also known as the Bhadra Wildlife Sanctuary) lies in the crescent shaped hollow formed by the Baba Budan mountain range, surrounded by hills, waterfalls and the beautiful Bhadra river and its tributaries.

The sanctuary comprises the Muthodi area, lying inside the crescent, and the Lakkavalli area, spread across the northern outer slopes of the Baba Budan mountains. The sanctuary was brought under Project Tiger in 1998. While the sanctuary is open throughout the year, the best season for spotting animals is between October and February.



Tiger, Muthodi Wildlife Sanctuary

The sanctuary is home to a profusion of animals, birds, fish, frogs, reptiles, insects, fungi, trees, plants and flowers. Wildlife found at the Muthodi Wildlife Sanctuary include:

Mammals: Tiger, leopard, wild dog, jackal, elephant, gaur, sloth bear, sambar, spotted deer, barking deer, mouse deer, wild boar, common langur, bonnet macaque, slender loris and the Malabar giant squirrel. **Birds:** Over 250 species of birds, including the ruby-throated bulbul, shama, Malabar whistling thrush, four species of hornbill, racquet-tailed drongo and the paradise flycatcher. **Reptiles:** Marsh crocodile, flying lizard, monitor lizard and a variety of snakes.

It is estimated that 35% of the plants, 42% of the fish, 48% of the reptiles and 75% of the amphibians that thrive in the Western Ghats are endemic, or native, to the region. It's worth noting that the frog *Nasikabatrachus sahyadrenis* was discovered here in 2003—and is classified as a living fossil.

ORION MALL & THE ARCADE



Orion Mall @ Brigade Gateway, in the Malleswaram-Rajajinagar area, will be spread over 600,000 sft on 4 levels. Designed to offer ample parking, a separate entrance and a drop-off area, the mall will offer a host of attractions—including a proposed street-side design with shops, cafés, restaurants, food court and a 12-screen multiplex.

The Arcade @ Brigade Metropolis, on Whitefield Road, is being designed as a shopping complex for both the residents and occupants of the enclave and people in the neighbourhood. It will have provisions for a supermarket, fruit and vegetable stalls, cold storage, pharmacy, clinics, beauty parlour, ATM, business centre, cafeterias and a food court.

Ph: +91-80-5137 9200 enquiry@brigadegroup.com
www.brigadegroup.com

INFO HEREIN IS CONCEPTUAL. DOES NOT FORM PART OF ANY OFFER OR CONTRACT. E&OE.

IMPORTANT PHONE NUMBERS (BANGALORE)

EMERGENCY SERVICES: Police **100** Fire **101** Ambulance **102**
FIRE FIGHTING SERVICE: Central Control **2297 1600, 2297 1550**
BLOOD BANKS: Rotary-TTK Blood Bank **2529 3486, 2528 7903**
HEALTH
St. John's Ambulance Association **2222 3384, 2229 5631**
HOSMAT **2559 3796-7**
Mallya Hospital **2227 7979, 2224 2325**
Wockhardt Cardiac Line **2226 8888**
TALKING YELLOW PAGES: 2333 3333
RADIO TAXI SERVICES: 2323 7191/2, 2551 0000,
2678 0044, 5110 0000, 5122 2555, 5122 2333, 2333 7777, 2333 5666

Holidays/Festivals in June 10 Second Saturday (S) S—State



Mullayyanagiri peak (10 km from Chikmagalur)

July 2006

S	M	T	W	T	F	S
30	31					1
2	3	4	5	6	7	8
9	10	11	12	13	14	15
16	17	18	19	20	21	22
23	24	25	26	27	28	29



PHOTOGRAPH BY: T.N.A. PERUMAL

Mullayyanagiri

10 km from Chikmagalur

Chikmagalur district has some of the most impressive ranges of the Western Ghats. Covered by deciduous and semi-evergreen shola forests and fed by rivers, streams and waterfalls, the mountain ranges here have some of the highest peaks between the Himalayas and the Nilgiris. The highest of them all is Mullayyanagiri, 1925 metres above sea level. The other lofty peaks include Baba Budangiri (1894 m), Kalhatgiri (1876 m) and Kudremukh (1894 m).



Inam Dattatreya Peetha, Baba Budangiri

Offering panoramic views of mountains and valleys, proximity to beautiful coffee plantations and a salubrious climate, the Baba Budan range—the closest to the Cascades Hill Resort & Spa—has become an increasingly popular trekking destination.

From mythological times, the Baba Budan range was known as Chandradrona Parvatha. It became known as Baba Budan in honour of Sufi saint Hazrat Syed Meeran Baba, also known as Baba Budan, who lived in these mountains around 1600 A.D. According to legend, after a pilgrimage to Mecca, he visited Yemen, where he smelled coffee flowers for the first time. So captivated was he by their scent that he brought back seven coffee seeds, hidden in his robes. These he planted on the mountain slopes near Chikmagalur, thus sowing the seeds of the coffee industry in India. In the 1800s, European planters began developing coffee plantations in Chikmagalur, which is now known as the coffee cradle of Karnataka.

Located in the Baba Budan range is a very unusual shrine: the Inam Dattatreya Peetha. Here a laterite cave is believed to have sheltered, at different times, both Muni Dattatreya (an incarnation of Brahma-Vishnu-Shiva) and the Muslim saint Hazrat Dada Hayath Mir Khalandar, sent to India by Prophet Mohammed. Both Hindus and Muslims visit the shrine seeking blessings.



Horanadu (100 km from Chikmagalur), covered by mist

LUXURY APARTMENTS



BANGALORE

Brigade Harmony, WHITEFIELD
3-bedroom luxury apts

A 60-apartment complex, blending the old-world charm of Whitefield with modern architecture.

Brigade Paramount, OLD MADRAS ROAD
2- and 3-bedroom luxury apts

With a clubhouse, swimming pool and landscaped central courtyard.

Brigade Lakeview, BTM LAYOUT
3- and 4-bedroom luxury apts

In an idyllic setting overlooking Madivala lake.

Brigade Palm Springs, J.P. NAGAR
3-bedroom luxury apts

With a clubhouse, swimming pool, party areas and landscaping.

MYSORE

Brigade Splendour, LALITHA MAHAL ROAD
3- and 4-bedroom luxury apts

Swimming pool, clubhouse, landscaped gardens abundant basement car parking.

Brigade Elegance, JAYALAKSHMIPURAM
3-bedroom luxury apts

Brigade Elite, K.R.S. ROAD
2- and 3-bedroom luxury apts

Brigade Habitat, LAKSHMIPURAM
2- and 3-bedroom luxury apts

Bangalore: +91-80-5137 9200 Mysore: +91-821-251 1239
enquiry@brigadegroup.com mysore@brigadegroup.com
www.brigadegroup.com



Hebbe Falls, Kemmangundi (55 km from Chikmagalur)

August 2006

S	M	T	W	T	F	S
		1	2	3	4	5
6	7	8	9	10	11	12
13	14	15 INDEPENDENCE DAY	16	17	18	19
20	21	22	23	24	25	26
27 GANESHA CHATURTHI	28	29	30	31		



PHOTOGRAPH BY: H. SATISH, A.R.P.S, M.F.I.A.P.

Hebbe Falls, Kemmangundi
55 km from Chikmagalur

At a height of 1434 metres above sea level, Kemmangundi is a small and charming hill station located in the Baba Budan mountain range. It is also known as K.R. Hills, in honour of Krishnaraja Wodeyar IV,



Shola forests on the slopes of Kemmangundi

who used it as a summer retreat. Later, the European planters at Chikmagalur 'took to the hills' of Kemmangundi and nearby Kalhatgiri during the summer

months, drawn by the bracing climate, enchanting hill and valley views, waterfalls and cascades and rich variety of flora.

The Karnataka Horticulture Department maintains the many ornamental gardens and the Horticultural Nursery at Kemmangundi. Many species of plants and flowers, including rare orchids, can be seen here. The vibrant colours of the flowers are attributed to the iron content in the soil.

Kemmangundi is an excellent place for trekking. An 8-km trek leads to Hebbe Falls, where the water cascades from a height of 250 feet to form Dodda Hebbe (Big Falls) and Chikka Hebbe (Small Falls). The pool formed by the falls is said to be infused with herbs, making a dip in these waters therapeutic as well as enjoyable. Kalahatti Falls, 10 km away, begins at the top of Chandradrona Hill. After falling 45 metres, the water then flows in front of the Veerabhadreshwara Temple, dedicated to Lord Shiva.



Jog Falls

The most famous waterfalls in the Western Ghats are the Jog Falls, the highest falls in Asia. Though Jog Falls is 210 km from Chikmagalur, its sheer scale and majesty makes the trip worth the effort. The falls are formed when the waters of the Sharavati river come cascading down a drop of 852 feet. Four separate falls are created in the process, known locally as Raja, Rani, Rocket and Rover. The Linganamakki Dam is located upstream. When its sluice gates are closed, it is possible to walk to the very bottom of the gorge.

THE WOODROSE
A club you'll be proud to belong to



LOUNGE OVERLOOKING THE CENTRAL COURTYARD



CENTRAL COURTYARD



BADMINTON COURTS



KITCHEN



THE BLUE ROOM, CONFERENCE HALL

- MELTING POT (MULTI-CUISINE RESTAURANT) | TONIC (THE BAR)
GOLDEN KRUST (BAKERY) | BARBECUE AREA | THE CAFÉ (OPEN-AIR COFFEE SHOP)
BADMINTON | BILLIARDS | CARDS ROOM | TABLE TENNIS | TENNIS | SQUASH
SWIMMING POOL | GYMNASIUMS | JACUZZIS | SAUNAS | STEAM ROOMS
THE BLUE ROOM (CONFERENCE HALL) | BOARDROOM
26 GUEST ROOMS | OPEN-AIR STAGE | OPEN-AIR DECK LOUNGE | LIBRARY
SALON | TERRACED COURTYARD | BASEMENT CAR PARK

ACCESS TO FACILITIES AT MLR CONVENTION CENTRE:
AIR-CONDITIONED 450-SEAT AUDITORIUM | 500-SEAT BANQUET HALL

Managed by: Brigade Hospitality Services Pvt. Ltd
BRIGADE MILLENNIUM CAMPUS, J.P. NAGAR 7TH PHASE, BANGALORE 560 078
PH: +91-80-5199 5999 enquiries@woodroseclub.com
www.woodroseclub.com

Holidays/Festivals in August

- | | | | |
|----|----------------------------|----|----------------------------------|
| 4 | Varamahalakshmi Vratha (R) | 16 | Janmashtami (R) |
| 9 | Rig + Yajur Upakarma (R) | 26 | Swarnagowri Vratha (R) |
| 12 | Second Saturday (S) | 27 | Ganesha Chaturthi (C, S) |
| 15 | Independence Day (C, S) | | S—State, C—Central, R—Restricted |



Sringeri, on the banks of the Tunga (90 km from Chikmagalur)

September 2006

S	M	T	W	T	F	S
					1	2
3	4	5	6	7	8	9
10	11	12	13	14	15	16
17	18	19	20	21	22	23
24	25	26	27	28	29	30



PHOTOGRAPH BY: T.N.A. PERUMAL

Sringeri, on the banks of the Tunga
90 km from Chikmagalur

One of the holiest and most important Hindu pilgrim centres in India, Sringeri is located amidst the forests of Chikmagalur, on the left bank of the Tunga river. It was the first of the four great Mutts started in the 8th century by Adi Shankaracharya, founder of the Advaita philosophy, for revival of the Hindu religion. Vidyaranya, who inspired the founding of the fabled Vijayanagar Empire, was a Jagadguru at Sringeri.



The Bhadra, which joins the Tunga at Kudali near Shimoga, to become the Tungabhadra river

The main temple complex at Sringeri contains the Shankara, Sharadamba and Vidyashankara temples. Of these, the most famous is the 14th century Vidyashankara temple; a blend of Dravidian, Hoysala and other styles of architecture. Adi Shankaracharya is said to have brought an idol of the Goddess Sharada from Kashmir and installed it in the temple. The temple has 12 sculpted pillars, each representing a sign of the zodiac, positioned so the sun's rays fall on each in order of the solar month. Also in the vicinity is a Jain basti dedicated to Parshwanath Tirthankara.

A bathing ghat for pilgrims, filled with huge fish, is located at the back of the temple complex. Across the bridge is the residence of the Jagadguru and the burial shrines of previous pontiffs. The Mutt runs a dining hall that caters to over 3,000-6,000 pilgrims a day, a hospital and many schools.

Famed as a centre of learning, the Sringeri Peetha contains a theological seminary, a training school for priests and a library of rare texts.

Over the centuries, the Mutt has enjoyed the patronage and protection of rulers from the region and far away, including non-Hindu rulers like the Adil Shahis of Bijapur, Hyder Ali and Tippu Sutan and British commissioners like Lord Cubbon and Lord Bowring.

According to legend, Adi Shankaracharya passed away on the banks of the Tunga river, close to Sringeri.



Vidyashankara Temple, Sringeri

Serenity
apartments for active senior citizens



Serenity apartments for active senior citizens is located within the Brigade Gardenia residential enclave in J.P. Nagar, South Bangalore. Serenity will offer senior citizens modern, well designed, easy-to-manage apartments with facilities and services that allow them to enjoy active, independent and fulfilling lives in a secure and beautiful environment.

- 1-bedroom apartments (750 sft to 950 sft) with a drawing-dining room and kitchenette, on ownership basis. Larger apartments have a study.
- Interiors are specially designed for the convenience of senior citizens.
- Common facilities: reception and lounge, dining hall, pantry, TV and reading room, library, access to Augusta Club, on-call assistance, emergency and first-aid.
- Optional services: Catered food, housekeeping and professional nursing.

Ph: +91-80-5137 9200
serenity@brigadegroup.com | www.brigadegroup.com

RAHUKALA		
Sun	4.30 -	6.00 p.m.
Mon	7.30 -	9.00 a.m.
Tue	3.00 -	4.30 p.m.
Wed	12.00 -	1.30 p.m.
Thu	1.30 -	3.00 p.m.
Fri	10.30 -	12.00 noon
Sat	9.00 -	10.30 a.m.

Holidays/Festivals in September

- 5 Tiru Onam (R)
- 6 Ananthapadmanabha Vratha (R)
- 9 Shab-e-Barat (R)/Second Saturday (S)
- 21 Mahalaya Amavasya (C, S)

S—State
C—Central
R—Restricted



White-water rafting near Agumbe (105 km from Chikmagalur)

October 2006

S	M	T	W	T	F	S
1 MAHANAVAMI / AYUDHA POOJA	2 GANDHI JAYANTHI / VIJAYADASAMI	3	4	5	6	7 °
8	9	10	11	12	13	14 BRIGADE ANNUAL DAY
15	16	17	18	19	20 NARAKA CHATURDASI	21 •
22 •	23 BALIPADYAMI	24	25	26	27	28
29	30	31				



PHOTOGRAPH BY: DR MANOJ C. SINDHGI

Agumbe

105 km from Chikmagalur

Agumbe, one of the highest points of the Western Ghats, lies in Shimoga district, close to the borders of Chikmagalur and Dakshina Kannada districts. Agumbe Ghat is one of the four mountain passes that connects the plains to the coastal region.

As the mountains rise precipitously from the flat coastal plain, several points along the western flank of the Sahyadris offer a spectacular view of the sun setting over the Arabian Sea. Agumbe, at



an elevation of 826 metres with a line of sight that extends 48 km into the Arabian Sea, is one of the best and most accessible of these points. Travellers from all over India and abroad come to

Agumbe to watch unforgettable sunsets, which are especially spectacular between November and January. A special platform, called Sunset Point (600 m), is a popular spot for viewing the sunsets.

Countless rapids and cascades flow down from the Western Ghats into the areas near and around Agumbe, making it a place of rivers, streams, ponds and waterfalls with pretty names like Onaki, Abbi, Barkana and Jogigundi. Post-monsoon, the waterfalls are a photographer's delight...exuding water mists and rainbows.

Known as the 'Cherrapunji of the South', Agumbe receives one of the highest rainfalls in India (over 7600 mm in rains). During the three months of the rainy season, the cloud cover is thick enough to block out almost all sunshine. With so much water, water sports cannot be far behind and the nearby Sitanadi is a favourite spot for white-water rafting.

During the dry months, Agumbe and its scenic environs are an ideal place for trekking, with Narasimha Parvatha being a very popular trekking destination. Local guides are available for the more adventurous trekking routes.

Nearby places worth visiting include the 14th century Gopalakrishna temple with its Hoysala style sculptures and the observatory maintained by the Meteorological Survey of India.

Incidentally, *Malgudi Days*, the television serial based on R.K. Narayan's much-loved book *Swami and Friends*, was shot on location at Agumbe.

CORPORATE RESIDENCES & SERVICED APTS



homestead

CAMBRIDGE ROAD | INDIRANAGAR | LAVELLE ROAD

Homestead, Bangalore's first professionally managed Serviced Apartments facility opened in 2001. Our services have now expanded to include Corporate Residences as well. Located in the heart of Bangalore, all our branches are well connected to the city's prime business centres. Features include fully furnished, tastefully designed apartments, well-equipped kitchens, and sports facilities like a gym, clubhouse and swimming pool. In addition, Homestead provides professional housekeeping, laundry and catering services, and round-the-clock security and maintenance. We are soon expanding our facilities to other parts of the city, including Jayanagar and Koramangala.

Ph: +91-80-2222 0966 / 67 / 68 Fax: +91-80-5123 3963
enquiry@homesteadbangalore.com www.homesteadbangalore.com

Holidays/Festivals in October

1	Mahanavami/Ayudha Pooja (C, S)	21	Shab-e-Quadar (R)
2	Gandhi Jayanti/Vijayadasami (C, S)	23	Balipadyami (C, S)
14	Brigade Annual Day/Second Saturday (S)	24	Ramzan (C, S)
18	Tula Sankramana (R)		
20	Naraka Chaturdasi (C, S) /Jumat-ul-vida (R)		

S—State
C—Central
R—Restricted



A view of the Kudremukh range (95 km from Chikmagalur)

November 2006

S	M	T	W	T	F	S
			1 KANNADA RAJYOTSAVA	2	3	4
5	6	7	8	9	10	11
12	13	14	15	16	17	18
19	20	21	22	23	24	25
26	27	28	29	30		



PHOTOGRAPH BY: H.SATISH

Kudremukh Mountain Range
95 km from Chikmagalur

For over two thousand years, sailors on the Arabian Sea were said to have recognised the coastline—and thereby their bearings—by the distinctive shape of a mountain peak.

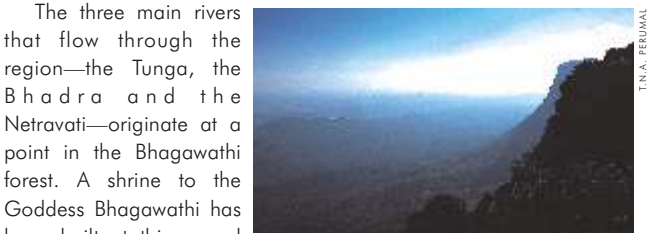
The important landmark for ancient mariners, standing 1894 metres above sea level, was Kudremukh, or Horse Head, from which the surrounding chain of hills took its name. Other peaks in the Chikmagalur stretch of the Western Ghats include Mullayanagiri (1925 m), Baba Budangiri (1894 m), Kalhatgiri (1876 m), Gangamoola (1454 m), Oddinagudda (1526 m), Maithvigudda (1661 m), Lakke Parvata (1421 m), Kanchikal Durga (1220 m) and Sakunagiri (1418 m).

Like most ranges within the Western Ghats, Kudremukh is filled with lush forests, rivers, streams, waterfalls and a rich variety of flora and fauna. The Kudremukh National Park is a protected area sheltering animals like the tiger, leopard, wild dog, jackal, lion-tailed macaque, common langur, sloth bear, gaur, sambar, spotted deer, barking deer, Malabar giant squirrel, giant flying squirrel, porcupine



T.N.A. PERUMAL

Two views of Baba Budangiri



T.N.A. PERUMAL

The three main rivers that flow through the region—the Tunga, the Bhadra and the Netravati—originate at a point in the Bhagawathi forest. A shrine to the Goddess Bhagawathi has been built at this sacred meeting place. This is also the location of a cave containing a 1.8 metre-high Varaha image.

Kudremukh is a mining town, with rich deposits of high-grade iron-ore. Interestingly, the Karnataka region region was a centre of production of sophisticated steel as far back as 2000 years ago. In the Arab world, China and Europe, this steel was known as wootz, derived from the Kannada word ukku.



THE BRIGADE SCHOOL



CO-EDUCATIONAL • CBSE SYLLABUS • PRE-SCHOOL TO STANDARD 10

The Brigade School, located in J.P. Nagar, began its first academic year in 2004. With over 800 students, the school has already earned the reputation of being an institution of excellence. A branch of the school will be opening in the Malleswaram-Rajajinagar area in 2007.

The school is managed by the Brigade Foundation, a not-for-profit trust set up by Brigade Group.

J.P. NAGAR CAMPUS @ BRIGADE MILLENNIUM, 7TH PHASE, BANGALORE 560 078
PH: +91-80-5130 1390 / 5760 2626 FAX: +91-80-5130 1391
enquiry@brigadeschools.org www.brigadeschools.org

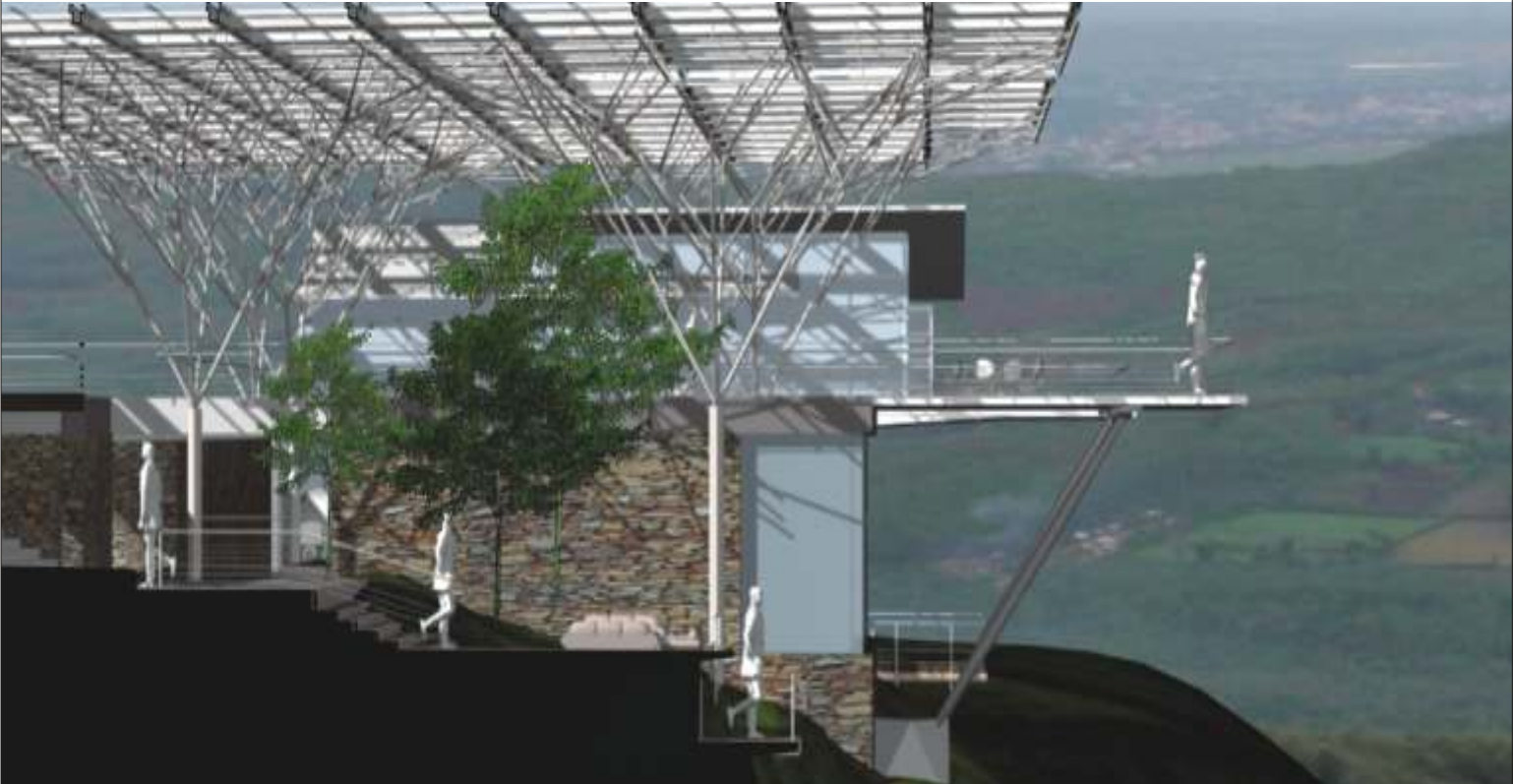
Conversion Factors

1 inch = 2.54 cm	1 sqm = 0.0002471 acre
1 cm = 0.3937 inch	1 sft = 0.093 sqm
1 foot = 30.48 cm	1 sq yard= 0.836 sqm
1 metre = 3.281 feet	1 acre = 43560 sft
1 yard = 0.914 metre	1 acre = 0.4047 hectare
1 km = 0.621 mile	1 acre = 40 guntas
1 mile = 1.609 km	1 gunta = 1089 sft
1 sqm = 10.764 sft	1 hectare= 2.471 acres
1 sqm = 1.196 sq yards	1 HP = 0.746 KW

Holidays/Festivals in November

- 1 Kannada Rajyotsava (S)
- 5 Gurunanak Jayanthi (S)
- 11 Second Saturday (S)

S—State



One of the villas at the Cascades Hill Resort & Spa (artist's impression)

December 2006

S	M	T	W	T	F	S
31					1	2
3	4	5	6	7	8	9
10	11	12	13	14	15	16
17	18	19	20	21	22	23
24	25 CHRISTMAS	26	27	28	29	30



Translating the vision...

CASCADES HILL RESORT & SPA



Some of the rooms and villas at the Cascades Hill Resort & Spa

We felt the best way to arrive at a truly unique design for our hill resort would be through an international architectural competition. This would allow us to tap the minds, imaginations, design skills and experience of professionals from

different countries and backgrounds.

We shortlisted 8 firms from the 30 that expressed an interest in taking part in the competition. The selected firms—from the USA, South Africa, Indonesia, Singapore, Sri Lanka and India—were sent a Request for Proposal. They were then invited to visit our site at Chikmagalur, to see and experience the ambience of our location before starting work on their designs.

To ensure confidentiality of entries, an independent agency was appointed to manage and co-ordinate the competition. Submitted designs were identified only by an 8-digit code selected by the participating firm.

The final design submissions were studied by a jury comprising leading architects, hospitality specialists and communication professionals. After several rounds of judging, it was decided the best entry was that of C & T Architects of Bangalore, India.

C & T's design has the resort blending into the environment in a natural, ecologically friendly way, with the visual focus being the beautiful valley and mountain views all around. Natural materials from the region will be utilised, wherever possible,



Observation deck

in construction. The accent is on feeling one with nature—while enjoying the highest comforts of everyday living.

Our resort design meets our high expectations...as it will yours.

- “A destination by itself. It creates a world away from the world. The dramatic character of this unusual site presents three major aspects:
- A view down the steep slope creates a sense of hovering above and away from the daily routines of earthly life.
 - A view up the slope creates a sense of the earth swooping dramatically upwards towards a rugged cliff whose skyline reaches for the sky.
 - Standing on such a topography, one is keenly aware of the sky.”

—PREM CHANDAVARKAR, C & T ARCHITECTS

PROPOSED FEATURES & FACILITIES AT THE RESORT:

50 double-rooms and 15 villas • Indoor and open-air restaurants Barbecue • Coffee shop • Bar • Swimming pool • Health Spa with ayurvedic massage • Gymnasium • Tennis courts • Table tennis Badminton courts • Jogging tracks • Putting green • Business centre with conference facilities • Discotheque • Library • Shopping arcade Observation deck with telescope

WORLD TIMES Based on (+) or (-) Indian Standard Time (IST)

Australia		Singapore	2:30 (+)
▪ Perth	2:30 (+)	South Africa	3:30 (-)
▪ Brisbane	4:30 (+)	Thailand	1:30 (+)
China	2:30 (+)	UAE	1:30 (-)
Germany	4:30 (-)	UK	5:30 (-)
Japan	3:30 (+)	USA and Canada	
Kenya	2:30 (-)	▪ Pacific time	13:30(-)
Kuwait	2:30 (-)	▪ Mountain time	12:30(-)
Malaysia	2:30 (+)	▪ Central time	11:30(-)
New Zealand	6:30 (+)	▪ Eastern time	10:30(-)
Nigeria	4:30 (-)		

Holidays/Festivals in December

- 5 Huthari (R)
- 9 Second Saturday (S)
- 25 Christmas (C, S)

S—State, C—Central, R—Restricted

JANUARY

S	M	T	W	T	F	S
	1	2	3	4	5	6
7	8	9	10	11	12	13
14	15	16	17	18	19	20
21	22	23	24	25	26	27
28	29	30	31			

FEBRUARY

S	M	T	W	T	F	S
				1	2	3
4	5	6	7	8	9	10
11	12	13	14	15	16	17
18	19	20	21	22	23	24
25	26	27	28			

MARCH

S	M	T	W	T	F	S
				1	2	3
4	5	6	7	8	9	10
11	12	13	14	15	16	17
18	19	20	21	22	23	24
25	26	27	28	29	30	31

APRIL

S	M	T	W	T	F	S
1	2	3	4	5	6	7
8	9	10	11	12	13	14
15	16	17	18	19	20	21
22	23	24	25	26	27	28
29	30					

MAY

S	M	T	W	T	F	S
		1	2	3	4	5
6	7	8	9	10	11	12
13	14	15	16	17	18	19
20	21	22	23	24	25	26
27	28	29	30	31		

JUNE

S	M	T	W	T	F	S
					1	2
3	4	5	6	7	8	9
10	11	12	13	14	15	16
17	18	19	20	21	22	23
24	25	26	27	28	29	30

JULY

S	M	T	W	T	F	S
1	2	3	4	5	6	7
8	9	10	11	12	13	14
15	16	17	18	19	20	21
22	23	24	25	26	27	28
29	30	31				

AUGUST

S	M	T	W	T	F	S
			1	2	3	4
5	6	7	8	9	10	11
12	13	14	15	16	17	18
19	20	21	22	23	24	25
26	27	28	29	30	31	

SEPTEMBER

S	M	T	W	T	F	S
30						1
2	3	4	5	6	7	8
9	10	11	12	13	14	15
16	17	18	19	20	21	22
23	24	25	26	27	28	29

OCTOBER

S	M	T	W	T	F	S
	1	2	3	4	5	6
7	8	9	10	11	12	13
14	15	16	17	18	19	20
21	22	23	24	25	26	27
28	29	30	31			

NOVEMBER

S	M	T	W	T	F	S
				1	2	3
4	5	6	7	8	9	10
11	12	13	14	15	16	17
18	19	20	21	22	23	24
25	26	27	28	29	30	

DECEMBER

S	M	T	W	T	F	S
30	31					1
2	3	4	5	6	7	8
9	10	11	12	13	14	15
16	17	18	19	20	21	22
23	24	25	26	27	28	29